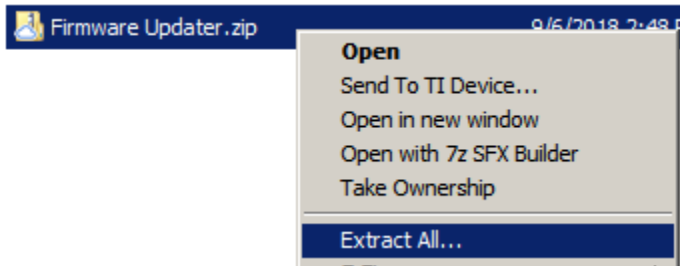


Installation

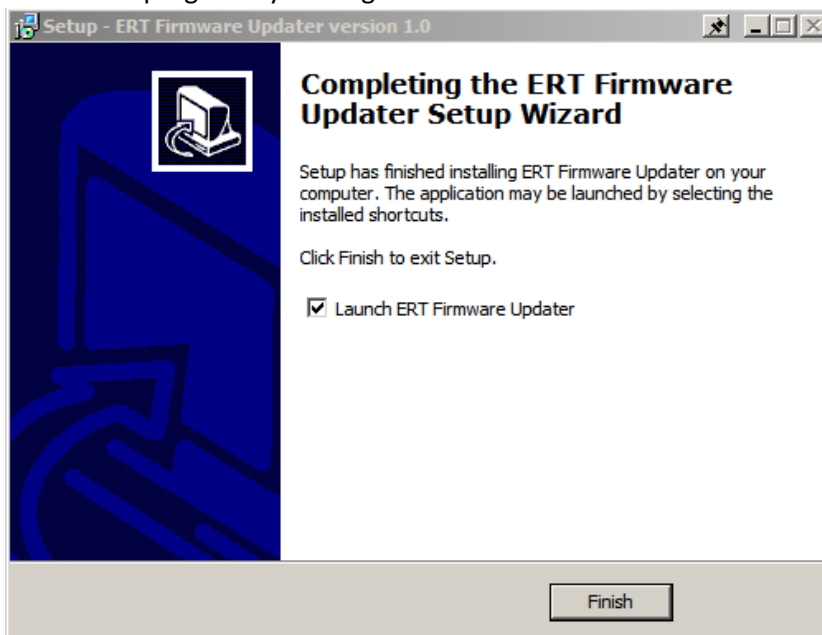
1. Download and extract the **Firmware Updater.zip** file



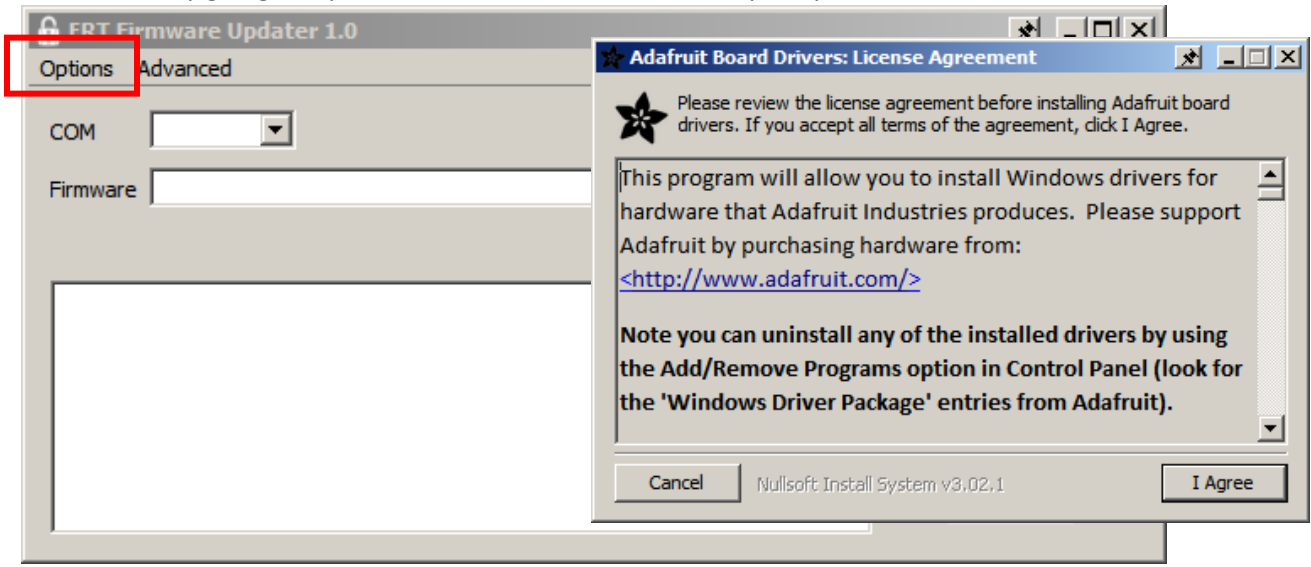
2. Run the **setup.exe** to install the firmware updater.



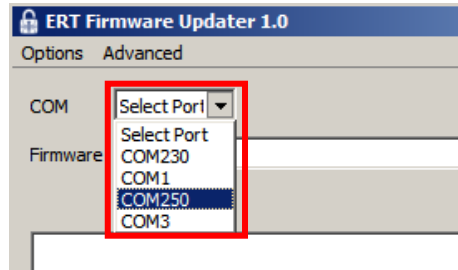
3. Launch the program by clicking Finish.



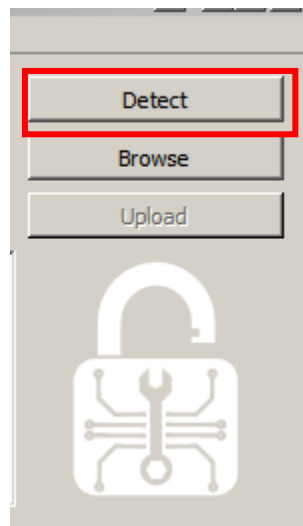
4. Install drivers by going to Options -> Install Drivers. Follow the prompts.



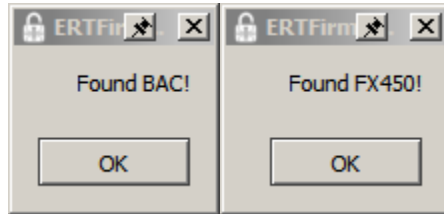
5. Connect the BAC to the computer via USB.
 - a. Press the reset button twice using a paper clip or similar instrument. The POWER LED should start slowly blinking.
6. Configure the options
 - a. Select the COM port (typically COM241 or 231).



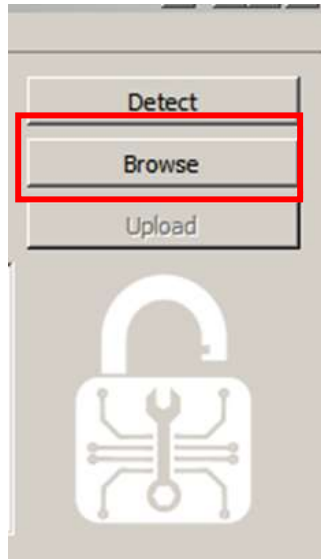
- b. Click Detect



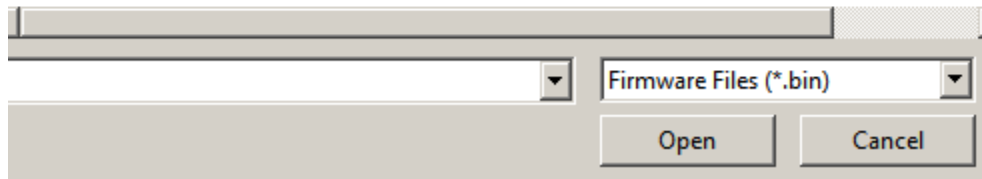
- c. If the correct port is selected you will receive one of two messages.



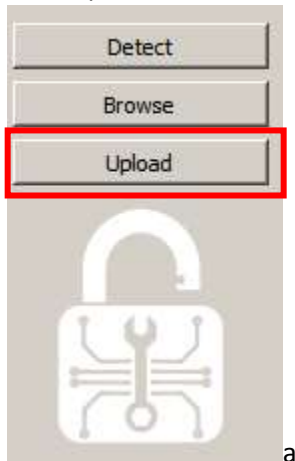
- d. Depending on which board type is found (above), choose the appropriate firmware file.



 bac_firmware.bin	9/6/2018 12:21 PM	BIN File
 fx450_firmware.bin	9/13/2018 1:53 PM	BIN File



7. Click Upload



8. A window will open showing the upload progress. When the window closes, the update is complete.

```
C:\Windows\system32\cmd.exe - upload.bat COM241 "C:\Users\Austin Lindquist\Documents\build"
[=====] 62% (1152/1831 pages)write(addr=0x20004034,size=0x1000)
writeBuffer(scr_addr=0x20004034, dst_addr=0x18000, size=0x1000)
[=====] 66% (1216/1831 pages)write(addr=0x20004034,size=0x1000)
writeBuffer(scr_addr=0x20004034, dst_addr=0x19000, size=0x1000)
[=====] 69% (1280/1831 pages)write(addr=0x20004034,size=0x1000)
writeBuffer(scr_addr=0x20004034, dst_addr=0x1a000, size=0x1000)
[=====] 73% (1344/1831 pages)write(addr=0x20004034,size=0x1000)
writeBuffer(scr_addr=0x20004034, dst_addr=0x1b000, size=0x1000)
[=====] 76% (1408/1831 pages)write(addr=0x20004034,size=0x1000)
writeBuffer(scr_addr=0x20004034, dst_addr=0x1c000, size=0x1000)
[=====] 80% (1472/1831 pages)write(addr=0x20004034,size=0x1000)
writeBuffer(scr_addr=0x20004034, dst_addr=0x1d000, size=0x1000)
[=====] 83% (1536/1831 pages)write(addr=0x20004034,size=0x1000)
writeBuffer(scr_addr=0x20004034, dst_addr=0x1e000, size=0x1000)
[=====] 87% (1600/1831 pages)write(addr=0x20004034,size=0x1000)
writeBuffer(scr_addr=0x20004034, dst_addr=0x1f000, size=0x1000)
```