



M3 and MQTT Setup

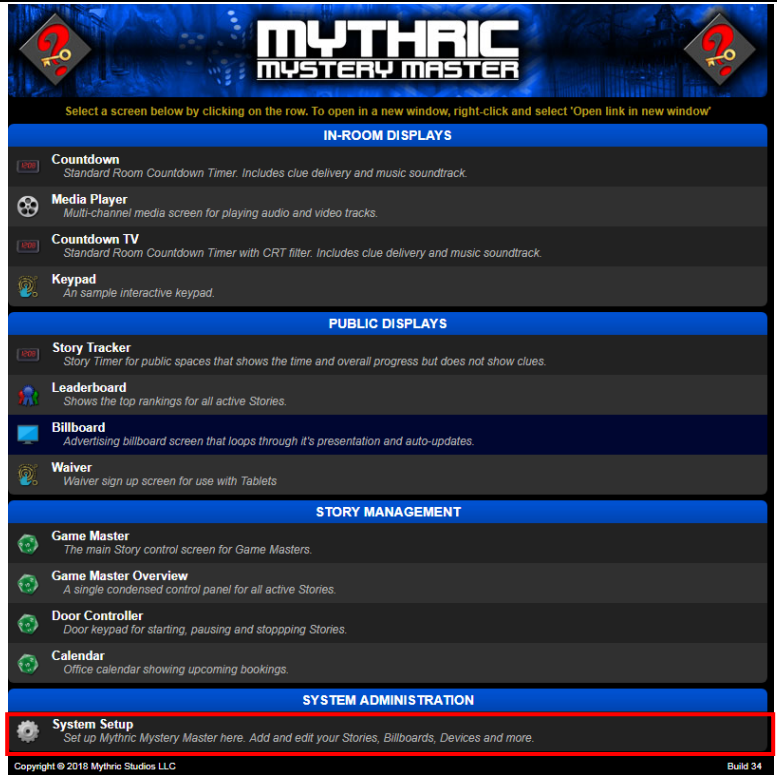
(preliminary)

<https://mosquitto.org/download/>

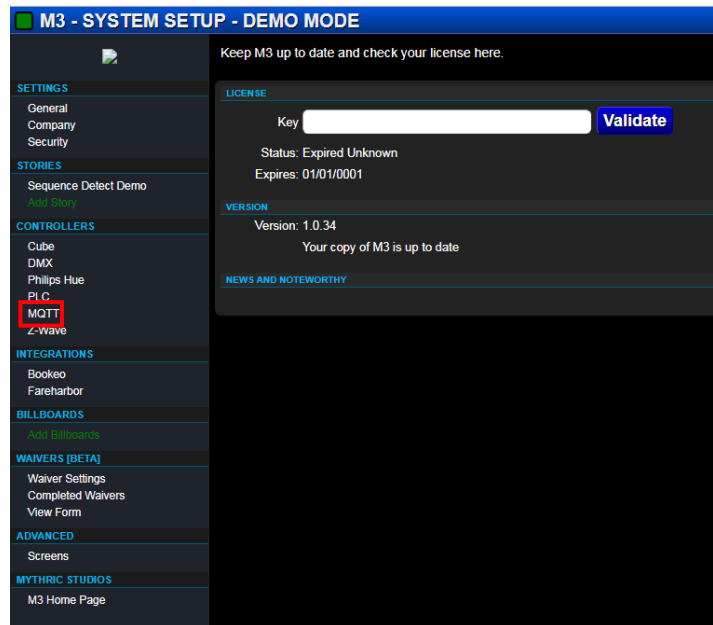
Make sure MQTT Broker is running



Start up M3 and click the button to open the main menu



Go to System Setup



Go to MQTT
under the Controllers column.

Set the properties for linking M3 act as an MQTT Broker or Client. Save

MQTT CLIENT

Broker: Enabled

ACTIVE MQTT TOPICS

Name	Value
Device/disable	
Device/enable	
Device/tx60_0input0	LOW
Device/tx60_0input1	LOW
Device/tx60_0input2	LOW
Device/tx60_0input3	LOW
Device/tx60_0input4	LOW
Device/tx60_0input5	LOW
Device/tx60_0input6	LOW
Device/tx60_0input7	LOW
Device/tx60_0output0	LOW
Device/tx60_0output1	LOW

ABOUT MQTT

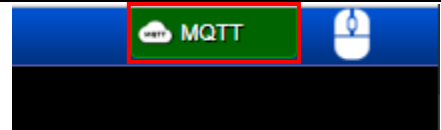
MQTT stands for MQ Telemetry Transport. It is a publish/subscribe, extremely simple and lightweight messaging protocol, designed for constrained devices and low-bandwidth, high-latency or unreliable networks. The design principles are to minimise network bandwidth and device resource requirements whilst also attempting to ensure reliability and some degree of assurance of delivery.

These principles also turn out to make the protocol ideal of the emerging "machine-to-machine" (M2M) or "Internet of Things" world of connected devices, and for mobile applications where bandwidth and battery power are at a premium.

MQTT LINKS

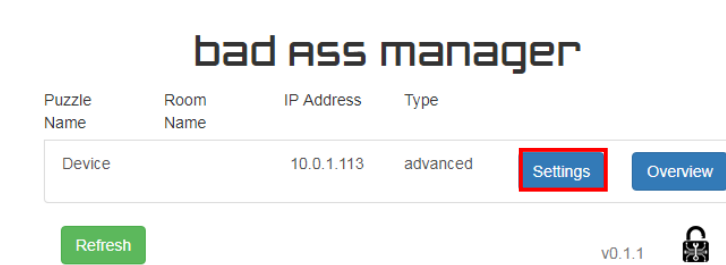
- MQTT Home Page
- MQTT on Wikipedia

Set the broker IP
and make sure MQTT is Enabled

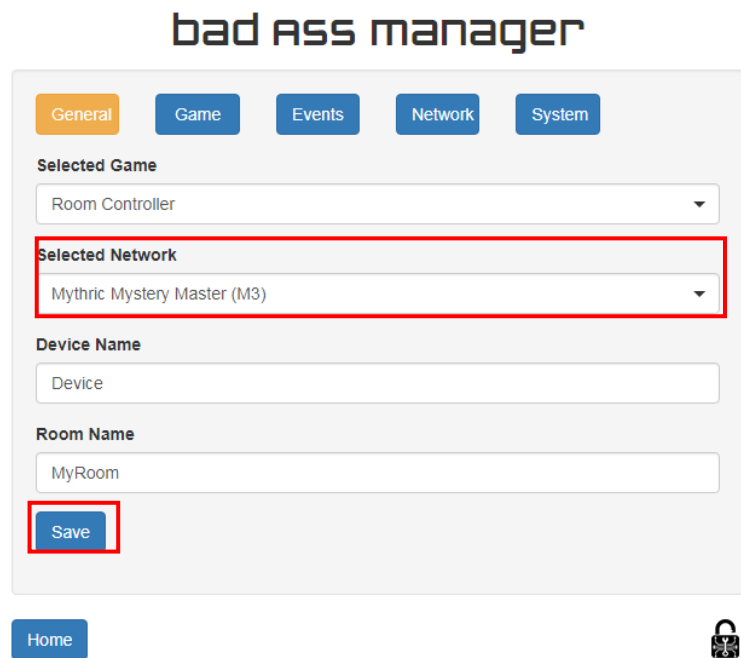


M3 Should now be connected to MQTT

BAC / BAM Configuration



Open the BAM Interface
and select your device settings



In the general settings tab
choose M3 as the Selected Network and click Save

bad ass manager

General Game Events **Network** System

Selected Network:
Mythic Mystery Master (M3)


Mac Address
0200AE000001

My IP
10.0.1.113

Gateway
10.0.1.1


Subnet Mask
255.255.255.0

DHCP Enable

Connection Status

Resubscribe

Host IP
10.0.1.120

Save

Home 

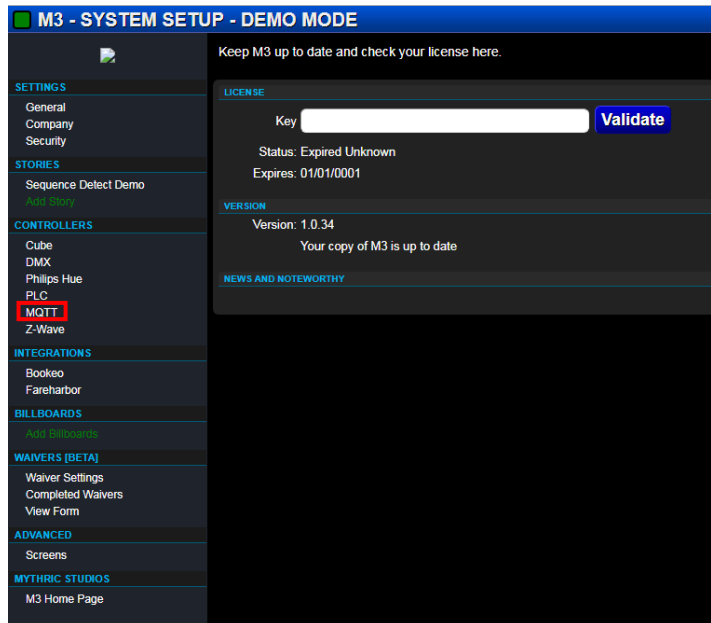
Choose the Network tab

and configure your network settings. Host IP should be the IP address of your MQTT Broker

BAC / M3 Integration



From the main menu select System Setup



Go to MQTT
under the Controllers column.

bad ass manager

General Game Events **Network** System

Selected Network:
Mythic Mystery Master (M3)


Mac Address
0200AE000001

My IP
10.0.1.113

Gateway
10.0.1.1


Subnet Mask
255.255.255.0

DHCP Enable

Connection Status

Resubscribe

Host IP
10.0.1.120

Save

Home 

In the BAM interface under the

Network settings tab click Resubscribe

Set the properties for linking M3 act as an MQTT Broker or Client. Save

MQTT CLIENT
Broker: 10.0.1.120 Enabled

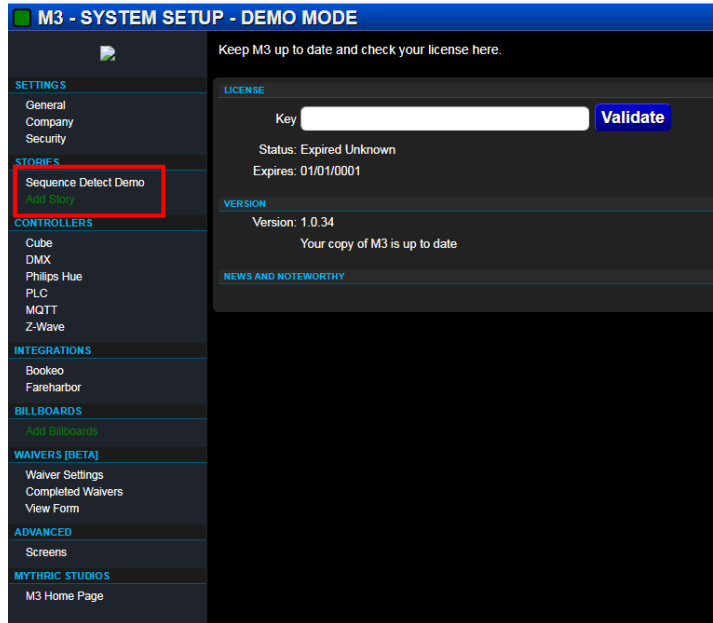
Name	Value
Device/disable	
Device/enable	
Device/bx60_0input0	LOW
Device/bx60_0input1	LOW
Device/bx60_0input2	LOW
Device/bx60_0input3	LOW
Device/bx60_0input4	LOW
Device/bx60_0input5	LOW
Device/bx60_0input6	LOW
Device/bx60_0input7	LOW
Device/bx60_0output0	LOW
Device/bx60_0output1	LOW

ABOUT MQTT
MQTT stands for MQ Telemetry Transport. It is a publish/subscribe, extremely simple and lightweight messaging protocol, designed for constrained devices and low-bandwidth, high-latency or unreliable networks. The design principles are to minimise network bandwidth and device resource requirements whilst also attempting to ensure reliability and some degree of assurance of delivery. These principles also turn out to make the protocol ideal of the emerging "machine-to-machine" (M2M) or "Internet of Things" world of connected devices, and for mobile applications where bandwidth and battery power are at a premium.

MQTT LINKS
- MQTT Home Page
- MQTT on Wikipedia

Your BAC should

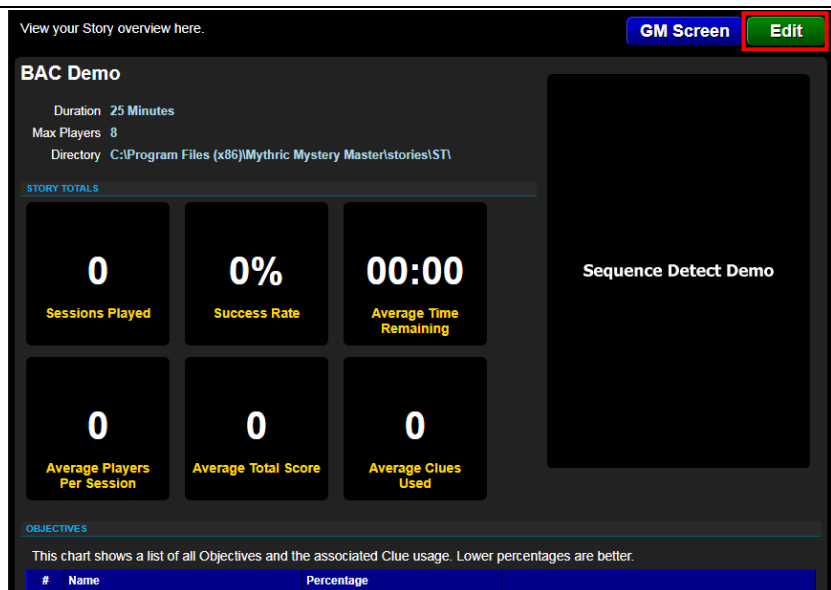
now populate the MQTT topics in M3



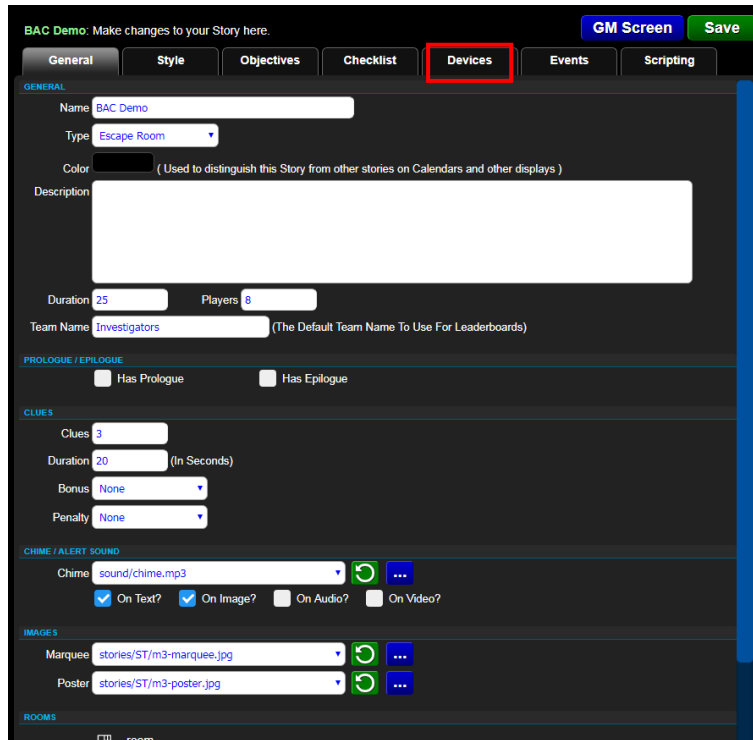
In the sidebar select your story
or Add Story to create a new one



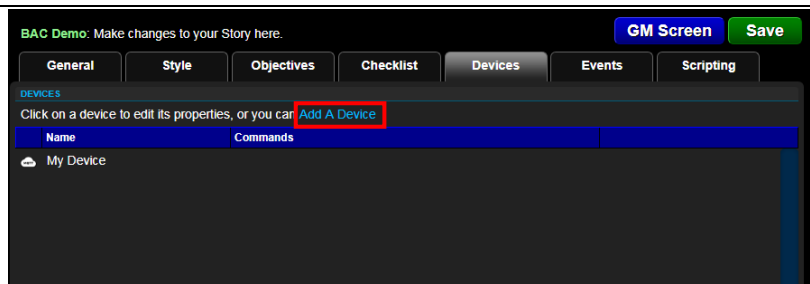
If you created a new
story set a name and ID and click Next



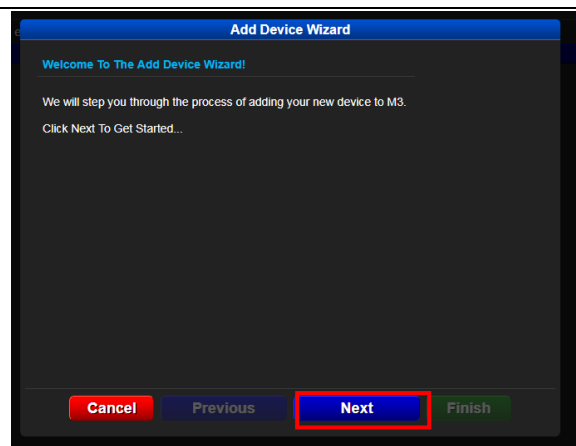
Press the Edit button



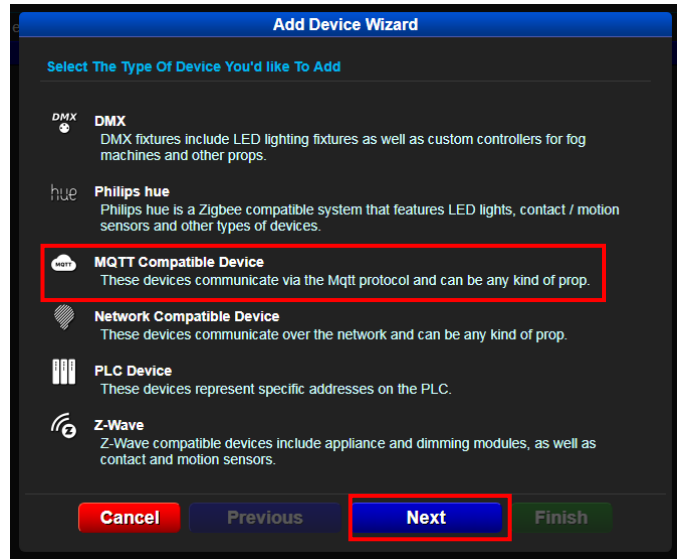
Go to the Devices tab



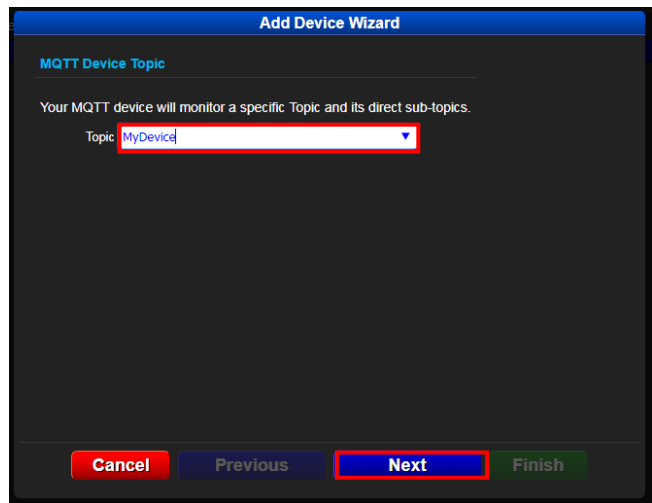
Select Add a Device



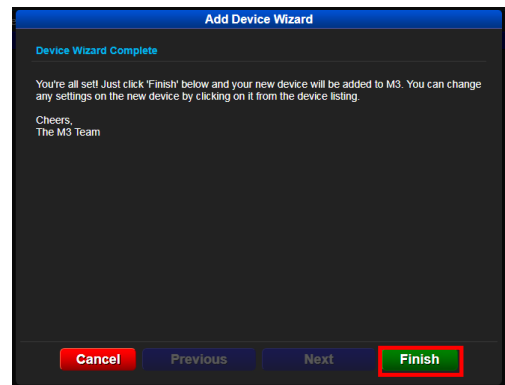
Select Next



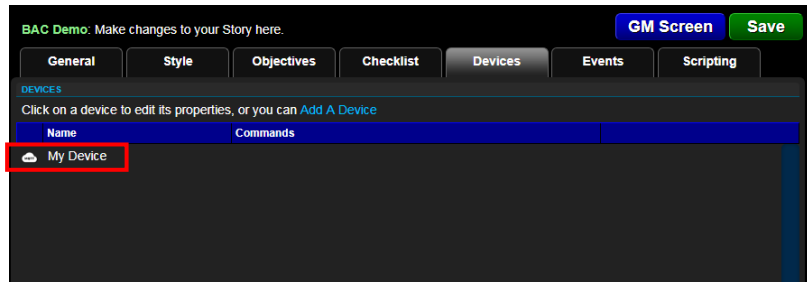
Select MQTT Compatible Device and click Next



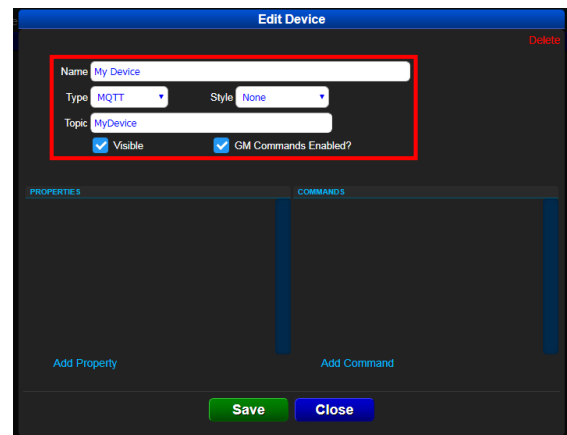
Set the MQTT topic to
your device name and click next



Select Finish



Your device should now be in the list. Select your device and click Edit



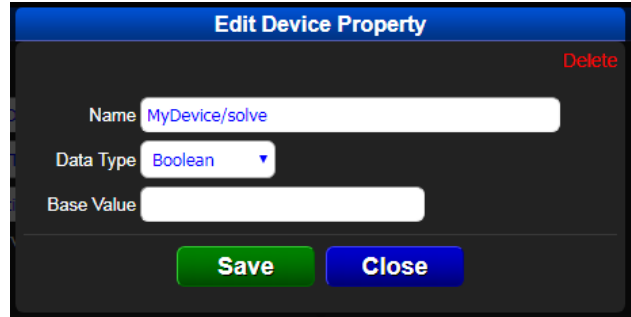
Make sure these are set correctly

Name is a nickname for your device. Type should be MQTT. Style is unimportant. Topic should be your device name set in BAM. Both Visible and GM Commands Enabled? should be checked.



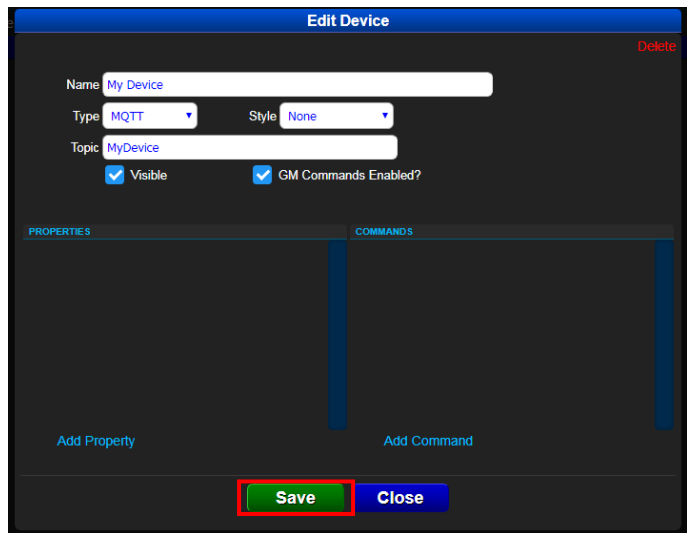
To add Commands select Add Command from the Edit Device dialog.

The Name field is a label for your command. The Text field is the command to send. The Command field is used for any parameters you send. Select Save

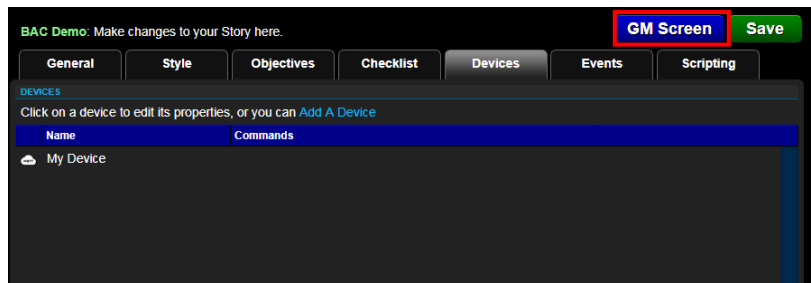


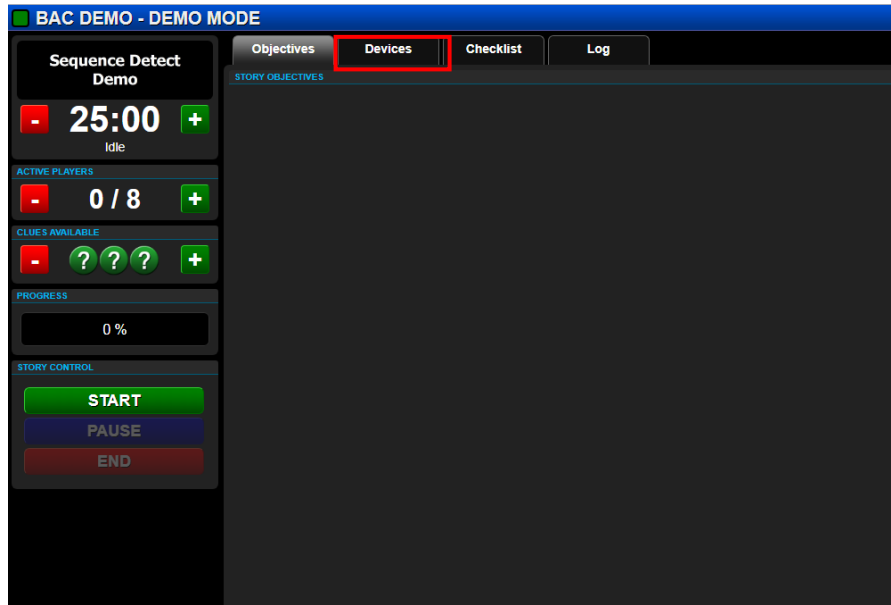
To add Properties, select Add Property from the Edit Device dialog.

The Name field is the command from the BAC to M3. Here you can select a data type, and optional default base value.

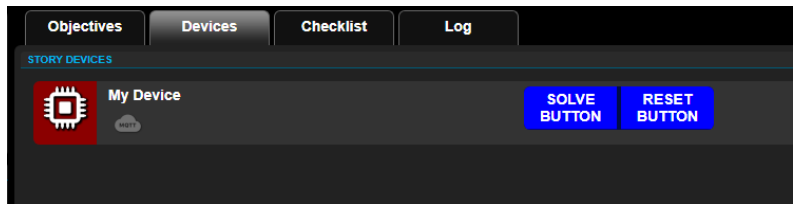


To view your device in action, click Save to close the Edit Device dialog and select GM Screen.





Go to the Devices tab



Here you can
monitor properties and send commands
